

The Firefly

a luxurious recreational retreat



Design copyright of Robinson Residential Design Inc.

Unique Features

- 189 sq.ft.
- contemporary design
- propane fireplace
- multiple exterior finishes
- loft area
- two hinged decks
- rolling stair/storage unit
- retractable kitchen table
- pull out sofa bed
- built in shelves
- wood interior
- off the grid option

Typical "UV" Construction Features

- patented #6018921 insulated floor system
- closed cell spray foam in walls, ceilings, and floor
- Pella windows and doors
- Kohler plumbing products
- Sea-Gull LED lighting
- Custom cabinets & built-ins
- solid surface countertops
- and more...

KOHLER



Sea Gull Lighting
Life Illuminated | Since 1919



ROBINSON RESIDENTIAL
PERSONALIZING HOME DESIGN

ZIPsystem
ROOF & WALL SHEATHING



3834 E. Puetz Road | Oak Creek, Wisconsin 53154

T: 414.762.0950 | F: 414.762.0955

sales@utopian-villas.com | www.utopian-villas.com



Rev. 7-16

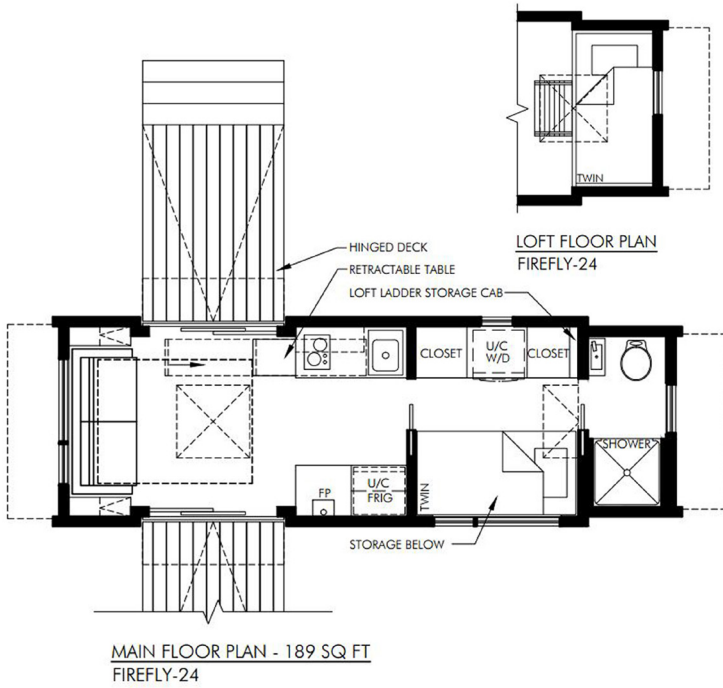
Fun Fact: Fireflies glow primarily to attract mates. The males often fly about while flashing in a specific pattern to let the ladies know they're available. Interested females glow in reply, and their flashes help the males find them.

The Firefly (fire-flahyl), being a very tiny yet illuminating insect describes how this unit lights up whether it's day or night. Catching your eye with the exterior architectural designs, the hinged decks and vaulted ceiling designs make this tiny home and travel trailer one of a kind. This 189 square foot tiny home is loaded with some unique custom storage areas, making sure that you have optimal space to store all of your belongings. The Firefly features a single twin size bed in the loft area as well as a pull out sofa in the spacious living quarters. Not only will you fall in love with the interior décor and hand crafted cabinetry, but this tiny home will light up your life with all the natural light shining into it. With two skylights, two separate double French doors, and luxurious windows, the Firefly will allow the light from the sun and the stars to shine throughout any area of your home. With this tiny home on wheels, the ultimate factor is that you can take this home with you anywhere to make those endless memories.

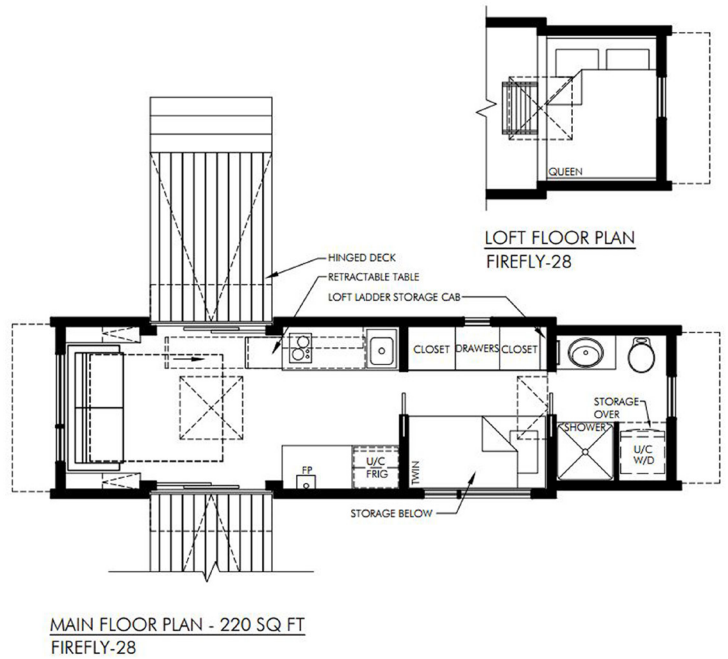
Firefly Floor Plan

Floor Plans

24' Model



28' Model



Design copyright of Robinson Residential Design Inc.



3834 E. Puetz Road | Oak Creek, Wisconsin 53154

T: 414.762.0950 | F: 414.762.0955

sales@utopian-villas.com | www.utopian-villas.com

